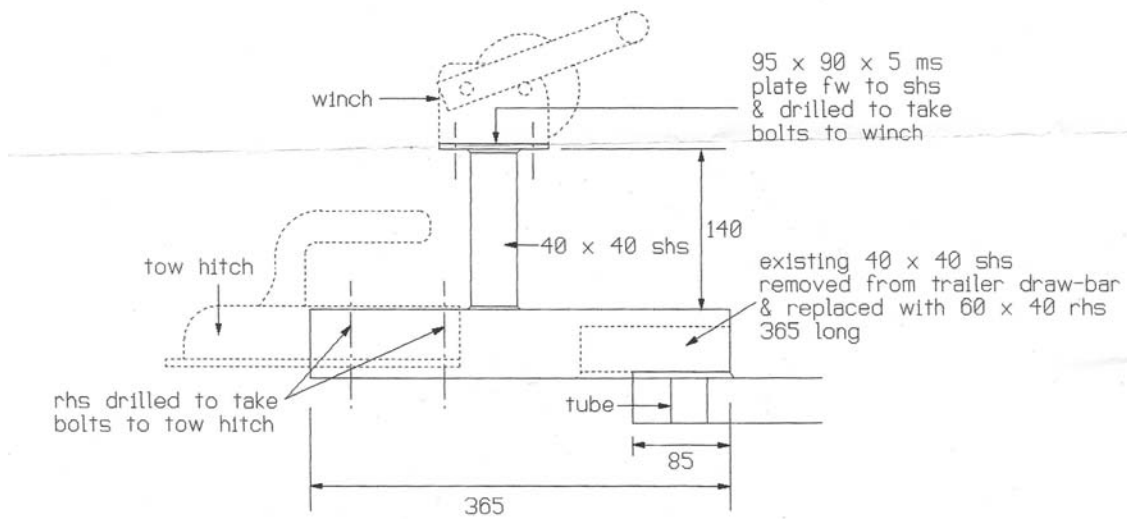


tube min diam 28mm length 40mm
welded to side of trailer

PLAN



winch

95 x 90 x 5 ms
plate fw to shs
& drilled to take
bolts to winch

tow hitch

40 x 40 shs

existing 40 x 40 shs
removed from trailer draw-bar
& replaced with 60 x 40 rhs
365 long

rhs drilled to take
bolts to tow hitch

tube

85

365

ELEVATION

DETAIL OF TRAILER EXTENSION & WINCH POST
Scale 1:5